



Domestic abuse and general support during Coronavirus/Covid-19 outbreak – newsletter #28 18-05-20

Hello all – I hope this newsletter finds you all well, it is **Mental Health Awareness Week** so please do also remember to look after yourselves as well as those you are working with and alongside. Our self-care is as important as that which we give to others, as the saying goes 'You can't pour from an empty cup.' Take care everyone, Steve

Guidance for professionals for Domestic Abuse Emergency Operating Procedures (COVID-19)



This is a difficult and worrying time for everyone – but particularly so for adults and children living with domestic abuse, and the professionals working hard to support them. It is imperative that we give the message to victims and families that we are still actively working to support them in this situation and will continue to ensure domestic abuse is a priority.

With this in mind the CSCP, Safer Cumbria and Cumbria Adults Safeguarding Board have produced [Guidance for professionals for Domestic Abuse - Emergency Operating Procedures \(COVID-19\)](#)

This document is published at [COVID-19 page for professionals](#) and on [Policies and Procedure manual documents library](#)

Home Office Domestic Abuse packs – see latest info from the Home Office here <https://www.dahalliance.org.uk/media/10702/domestic-abuse-partner-pack.pdf>

Latest domestic and sexual abuse news/articles

1. How can family and friends help someone experiencing domestic abuse - <https://soundcloud.com/domestic-abuse-podcast/how-can-family-and-friends-help-someone-experiencing-domestic-abuse>
2. 'Coronavirus murders': media narrative about domestic abuse during lockdown is wrong and harmful - <https://theconversation.com/coronavirus-murders-media-narrative-about-domestic-abuse-during-lockdown-is-wrong-and-harmful-137011>
3. Domestic abuse survivors must be prioritised for social housing during lockdown, charities say - <https://www.independent.co.uk/life-style/women/domestic-abuse-women-housing-lockdown-coronavirus-refuges-a9514026.html>
4. Why do we blame women for the actions of rapists, traffickers, and abusers? - <https://uk.style.yahoo.com/why-blame-women-actions-rapists-132518056.html>
5. When staying at home is the most dangerous thing you can do - <https://www.you.co.uk/safelives-domestic-abuse-during-coronavirus-pandemic/>

It's Mental Health Awareness Week 18-25 May – see press article here https://www.independent.co.uk/life-style/health-and-families/mental-health-awareness-week-when-theme-foundation-kindness-a9517191.html?utm_medium=Social&utm_source=Twitter#Echobox=1589785926 The theme for this year is kindness, see images attached for social media.

Rape Crisis England and Wales - Please see link which provides updated information from Rape Crisis England and Wales (RCEW) and the Covid-19 pandemic. This includes information about support, safety advice for victims living with their perpetrator and tips for social distancing. <https://rapecrisis.org.uk/get-help/coronavirus/>

Assorted information from Department of Work and Pensions -

Pension Credit – On line - a new service so pensioners can now apply for [Pension Credit online](#). This will supplement the existing telephone and postal claim services. It will enable customers to make a claim without having to leave home to post forms or wait to get through on the phone – helping them also to adhere to social distancing and shielding measures. To ensure security for customers any personal information will be sent direct to DWP. We will also only pay people into the verified account that they get their State Pension paid into.

Bereavement or Funeral Expenses Payments for customers - Any customers requiring support with Bereavement or Funeral Expenses Payment (FEP), should contact the Bereavement Service on 0800 731 0469 or should download a [FEP claim form from GOV.UK](#)

Closure of the Post Office card Account - Applications for Post Office card accounts will end for all customers from the 11 May 2020. This change applies to new claims only and **does not** affect customers with an existing account. Customers who are unable to be paid via DWP's standard method into a bank, building society, or credit union account will be offered payment via HMG Payment Exception Service at new claim stage.

Childcare Costs - Temporary measures will ensure critical workers are still eligible for childcare offers if their income has changed due to coronavirus. The Government has announced that any working parent usually eligible for 30 hours free childcare or Tax-Free Childcare will remain eligible if they fall below the minimum income requirement due to COVID-19. Subject to Parliamentary approval, parents who are critical workers will also remain eligible for these entitlements if their income has increased over the maximum threshold during the COVID-19 pandemic. Further details are [available on GOV.UK](#)

Guidance - Latest Government Guidance about coronavirus including employment, financial support and money can be found on [Gov.UK](#)

Champions' Network newsletters - You can find all the previous copies of these newsletters in PDF format at <http://www.womenscommunitymatters.org/cumbria-domestic-champions/> just in case you lose/misplace any info.

“No act of kindness, no matter how small, is ever wasted.” Aesop

Kind regards, Steve



Mental Health
Foundation

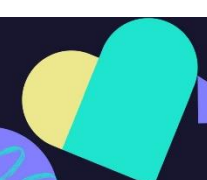
**MENTAL
HEALTH
AWARENESS
WEEK** →

18-24 MAY

2020



KINDNESS



BE KIND

WHENEVER POSSIBLE.

It is Always POSSIBLE.

DALAI LAMA

©AGCM, Inc.



ONE
KIND
WORD

can change
someone's
entire day

Behappy.me